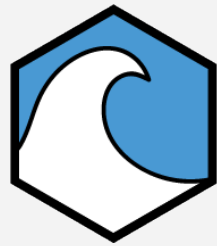
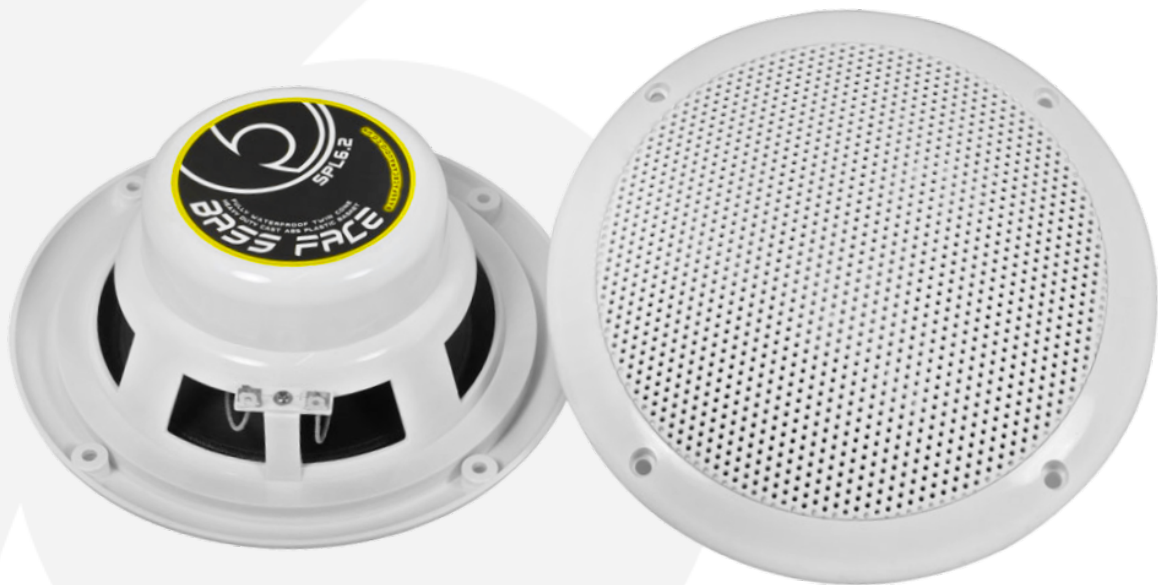


SPL6.2 6.5" 17cm 40hm Waterproof Coaxial Speaker Pair 150w RMS White



MARINE



Instruction manual

Thank you for choosing Bassface. From the simplest connector to our top of the range amplifier - every element of these products has been designed to give you the best possible performance for your money. Please take the time to read these instructions carefully as they contain useful and important information. Modern high power audio systems can generate voltages at the speaker similar to mains operated equipment - for some reason everyone seems to ignore or forget this. Your wiring needs to be good to be safe. Please remember this and take your time. Please exercise caution when setting volume levels - powerful audio equipment can easily produce enough sound to permanently damage hearing. Remember that audio competitors use ear protection when operating and competing. Do remember that incorrect installation or abuse is not covered under warranty - please make sure that your installation and any partnered product is suitable and compatible. If you are unsure please seek qualified advice before proceeding. Always use appropriate hand and eye protection when working with tools, and always work within your capabilities as an installer. We offer a 12 month manufacturer warranty via your distributor or retailer. Please retain your purchase receipt as proof of purchase. Please note that Bassface operates a policy of continuous product development and we reserve the right to change specification without prior notice. You can follow our process on our website by reviewing the version history information.

Please note that we sometimes include information inside these manuals which we feel is of potential value to the client on related subjects such as conversion charts, capacitance values or wiring diagrams. Please feel free to copy any of this information since it is in the public domain.



Installation (Standard Baffle Type)


For installation of our range of standard type waterproof speakers the first task is to ensure that the preposed location offers enough depth to accommodate the rear protrusion. Refer to the specification of the speaker and check carefully. We offer a range of sizing and dimensional information in our specification that will help you to site and install the driver.

Remember that the baffle (mount) board stiffness and rigidity will hugely impact the performance of the speaker. Dense material and solid fitting will result in superior performance.

Bassface weatherproof speakers are designed to be enjoyed in an outdoor environment in addition to still being suitable for indoor or vehicle use. With the exception of our specialist wakeboard speakers the drivers are not immersion sealed but are designed to be tough enough to withstand weather and temperature changes.

Please note that the cosmetic appearance of our outdoor speakers is not covered under warranty and that it is considered normal for cosmetic surface corrosion to occur on metal speaker grilles, fixing screws and other metal points. This will not impact the performance of the product. Many customers choose to periodically apply UV protection and anti corrosion care products to maintain the fresh appearance of the speakers. If cosmetic appearance is a crucial part of your purchase we always recommend the selection of one of our speakers with a plastic grille.

Performance Notes:



All of the Bassface speakers have been individually designed and tested by real people in the UK to make sure that they offer class leading performance. Most installations sound great but the most common complaint we hear in relation to performance of correctly installed speakers is that the speaker “can’t handle the bass” at higher volumes. What is actually happening in the vast majority of cases is that the stereo powering the speakers is itself distorting, and sending the distortion to the speakers. What you hear is that distortion out of your new speakers, as opposed to the speakers creating the distortion! We do recommend the use of a suitable external amplifier in these cases.