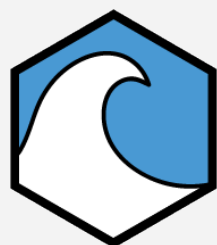
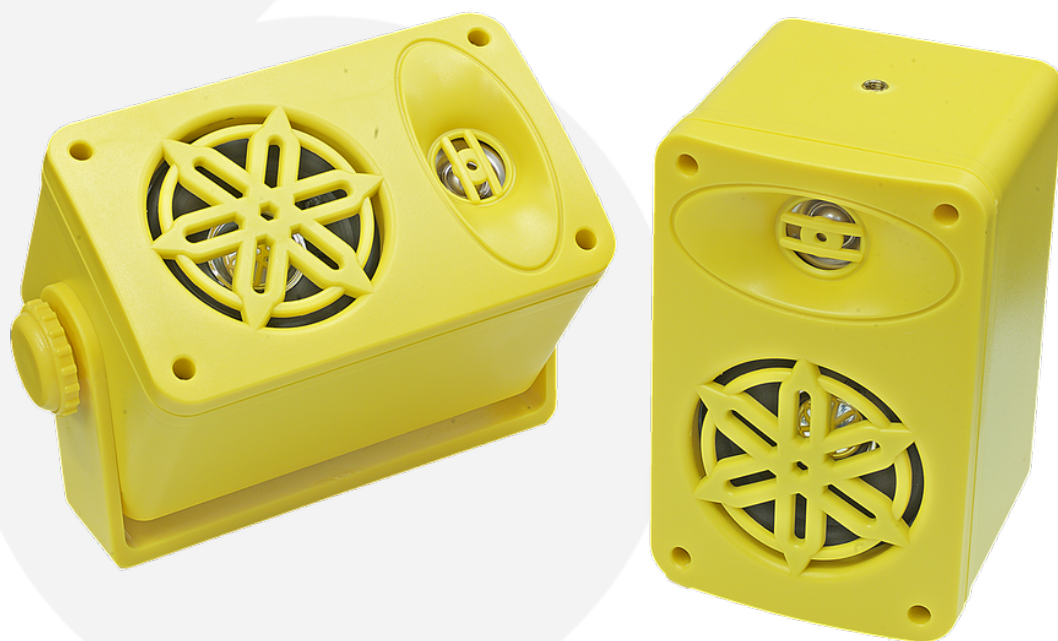


**SPLBOX.4YL 40hm 2x50w RMS  
Waterproof Outdoor Mini Box Speakers  
(Yellow) Pair**



**MARINE**



**Instruction manual**

Thank you for choosing Bassface. From the simplest connector to our top of the range amplifier - every element of these products has been designed to give you the best possible performance for your money. Please take the time to read these instructions carefully as they contain useful and important information. Modern high power audio systems can generate voltages at the speaker similar to mains operated equipment - for some reason everyone seems to ignore or forget this. Your wiring needs to be good to be safe. Please remember this and take your time. Please exercise caution when setting volume levels - powerful audio equipment can easily produce enough sound to permanently damage hearing. Remember that audio competitors use ear protection when operating and competing. Do remember that incorrect installation or abuse is not covered under warranty - please make sure that your installation and any partnered product is suitable and compatible. If you are unsure please seek qualified advice before proceeding. Always use appropriate hand and eye protection when working with tools, and always work within your capabilities as an installer. We offer a 12 month manufacturer warranty via your distributor or retailer. Please retain your purchase receipt as proof of purchase. Please note that Bassface operates a policy of continuous product development and we reserve the right to change specification without prior notice. You can follow our process on our website by reviewing the version history information.

Please note that we sometimes include information inside these manuals which we feel is of potential value to the client on related subjects such as conversion charts, capacitance values or wiring diagrams. Please feel free to copy any of this information since it is in the public domain.



## Installation (Box Type)

To install a box type speaker the first decision is placement. If the installation is to be in a room where the aim is overall tone rather than stereo performance we suggest that if possible the signal be configured in a mono output to improve consistency and bass response. If the installation is to be stereo then give consideration to placement to achieve best separation of the channels.

If the installation is outdoors, again, give thought to minimising the weather impacting the speakers by careful placement. Route cables carefully and remember that weather ingress into the terminal blocks can cause corrosion because of the dissimilar metals in the cables and the speaker connections. We recommend that once the installation is tested the terminals be sealed completely using clear silicone.

Mounting the boxes can be accomplished using the provided brackets or by using the mounting holes (where applicable) in the rear of the box. Either way, remember that the more firmly you can affix the box to the building or vehicle the better the bass performance of the speaker will be.



Bassface weatherproof speakers are designed to be enjoyed in an outdoor environment in addition to still being suitable for indoor or vehicle use. With the exception of our specialist wakeboard speakers the drivers are not immersion sealed but are designed to be tough enough to withstand weather and temperature changes.

SPLBOX.4 has integrated plastic grilles and ABS plastic brackets. This minimises maintenance in terms of corrosion resistance. Please be aware, however, that the colouring of the speaker and its components will still be subject to UV decay caused by exposure to the sun. We recommend periodic coating with a UV protective spray to prevent bleaching of the colours. Please note that faded speakers WILL NOT be covered by warranty and it is considered to be a customer requirement to look after this aspect of the product.

#### Performance Notes:

All of the Bassface speakers have been individually designed and tested by real people in the UK to make sure that they offer class leading performance. Most installations sound great but the most common complaint we hear in relation to performance of correctly installed speakers is that the speaker “can’t handle the bass” at higher volumes. What is actually happening in the vast majority of cases is that the stereo powering the speakers is itself distorting, and sending the distortion to the speakers. What you hear is that distortion out of your new speakers, as opposed to the speakers creating the distortion! We do recommend the use of a suitable external amplifier in these cases.

